



Schweizerische Eidgenossenschaft
Confédération suisse
Confederazione Svizzera
Confederaziun svizra

Swiss Agency for Development and Cooperation SDC
स्वीस सरकार विकास सहयोग एसडीसी

Primary Stakeholders

The primary beneficiaries of the project are men and women returnee migrant workers (RMWs) who are returning to Nepal from CoDs, mainly the Gulf Cooperation Council (GCC) countries and Malaysia. The secondary beneficiaries are federal, provincial and local governments as well as service providers and private sector actors (private companies, cooperatives, civil society organisations)

Roles

- Technical Assistance
- Fund Manager
- Implementation support
- Evidence based advocacy

Budget

Phase Budget: 6.5 million CHF

Geographic Outreach

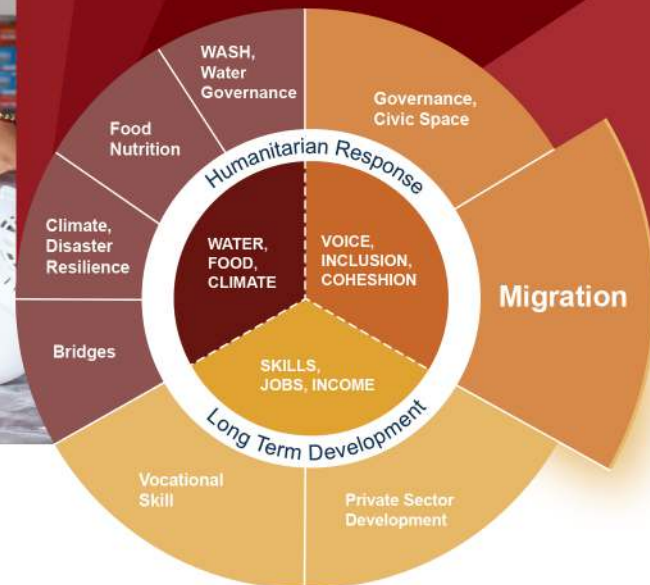


20 local governments in Province 1 and Madesh Province

0 75 150 Km

ReMi

Reintegration of Returnee Migrant Workers Project



CONTACT US

Reintegration of Returnee Migrant Workers Project

Dhobighat, Lalitpur
Email: remi.np@helvetas.org
Website : <https://helvetas.org>
Phone: +977+01-5421063/5437148



Returnee Migrant Workers (RMWs) have re-established themselves in Nepal and actively participate in social, cultural, economic and political life



ABOUT THE PROJECT

Reintegration of Returnee Migrant Workers (ReMi) project is a bilateral initiative of Governments of Nepal and Switzerland. The project is funded by the Swiss Agency for Development and Cooperation and is implemented by the Ministry of Labor, Employment and Social Security, provincial line ministries and local governments in Province one and Madhesh Province. Helvetas Nepal, with support from Terre des Hommes Foundation, provides with technical assistance on the project. Currently in its first phase, the project is implemented from July 2022 to July 2026.

ReMi applies a holistic approach for the sustainable reintegration of returnee migrant workers by introducing mechanisms to address economic, psychosocial, social, cultural and political aspects of migration and return, the latter integrating questions of the impact of migration on individual, family and society/community acceptance of migration.

1. Social, Cultural, and Political Reintegration

The ReMi project capacitates the Employment Services Center (based at local government level) to offer a 'comprehensive reintegration services package' to migrant workers and returnees, which includes guidance on developing a personalized Return and Reintegration Plan (RRP).

This includes family counselling for setting a joint vision and objectives for migration, needs/vulnerability assessment and lead to referrals to other specialized social support (e.g. advanced counselling, safe shelters, legal/paralegal support, financial literacy and compensation from the Foreign Employment Welfare Fund etc.) provided by social services agencies and other related non-state actors at Federal, Province, and Local government levels. Dedicated mechanisms (SOPs, identification tools, counselling guidelines, referral pathway, etc.) are co-built with ESCs for social assistance of RMWs and operationalised based on best practice.

2. Economic Reintegration

The ReMi seeks to create an enabling business environment for R/MWs by improving support functions of localized business development service providers (BDSP) while strengthening links between government and private institutions for skills training, recognition and employment opportunities. The market system development (MSD) approach guides these interventions and ReMi play the role of facilitator to resolve systemic constraints and strengthen the capacities of the respective actors.



3. Knowledge Management and Policy Advocacy

The ReMi project contributes to evidence-based policy dialogue at three levels:

At Local and Province level ReMi strengthens, mobilizes and empowers Migrant Rights' Networks to identify issues faced by migrant workers, returnees and their families and raise concerns to the relevant authorities, institutions, service providers or other key stakeholders.

At Federal Level, ReMi collects, compiles and analyses evidence, case studies and anecdotes from the local/province levels to inform policy dialogue and formulation.

ReMi also contributes to migration discourse at the South Asia Region and global dialogues, primarily to the collection and compilation of evidence, trends analyses and case studies contributing to key advocacy issues.